

# RESIDENCE 01

FLOORS 4 THROUGH 10

ALTERNATE

4 BEDROOMS

5 BATHROOMS

POWDER ROOM

INTERIOR

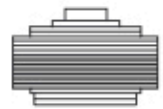
4,869 ft<sup>2</sup> / 452 m<sup>2</sup>

EXTERIOR

1,542 ft<sup>2</sup> / 143 m<sup>2</sup>

TOTAL

6,411 ft<sup>2</sup> / 596 m<sup>2</sup>



## THE PERIGON

MIAMI BEACH

5333 Collins Avenue, Miami Beach

[theperigonmiami.com](http://theperigonmiami.com)

ORAL REPRESENTATIONS CANNOT BE RELIED UPON AS CORRECTLY STATING THE REPRESENTATIONS OF THE DEVELOPER. FOR CORRECT REPRESENTATIONS, MAKE REFERENCE TO THIS BROCHURE AND TO THE DOCUMENTS REQUIRED BY SECTION 718.03, FLORIDA STATUTES, TO BE FURNISHED BY A DEVELOPER TO A BUYER OR LESSEE. These materials are not intended to be an offer to sell, or solicitation to buy, an interest in the condominium. Such an offering shall only be made pursuant to the prospectus offering circular for this condominium and no statement should be relied upon or made in the prospectus or in the applicable purchase agreement. In no event shall any solicitation, offer or sale of an unit in the condominium be made in, or to residents of, any state or country in which such activity would be unlawful. This project is being developed by 5333 Collins Associates, LP a Delaware limited liability partnership, which has been established for each person. Stated square footages and dimensions are measured to the exterior boundaries of the exterior walls and the outside of exterior door swing walls and, in fact may vary from the square footages and dimensions that are determined by using the description and definition of the "unit" set forth in the Declaration with its generally only including the interior square between the perimeter wall to and excludes all interior structural components and other common elements. This method is generally used in sales materials and is provided to allow a prospective buyer to compare the units with units in other condominium projects that utilize the same method. For your reference, the area of the Unit, determined in accordance with these defined unit boundaries, is set forth on Exhibit "I" to the Declaration. Measurements of rooms set forth on this floor plan are generally taken at the farthest points of each room (as if the room were a perfect rectangle, without regard for any cabinet or fixtures). Accordingly, the area of the actual room will typically be smaller than the product obtained by multiplying the stated length and width. All dimensions are estimates which will vary with actual construction, and all floor plans, spot floor plans and other development plans are subject to change and will not necessarily accurately reflect the final plans and specifications for the development. ©



OCEAN VIEW

OCEAN VIEW

ENGEL & VÖLKERS®



# Residence 03

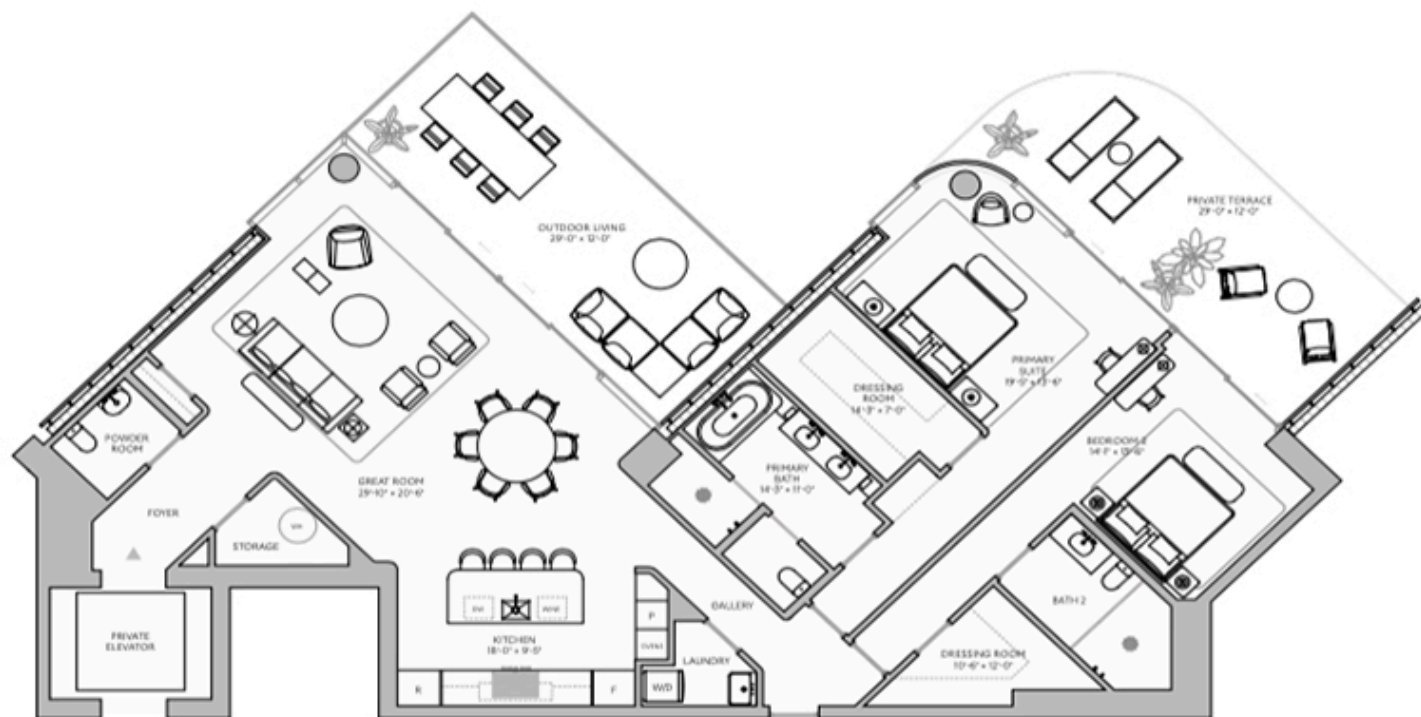
Floors 4-10

## RESIDENCE FEATURES

2 Bedrooms  
2 Bathrooms  
Powder Room

Interior	2,259 ft <sup>2</sup>	210 m <sup>2</sup>
Exterior	672 ft <sup>2</sup>	62 m <sup>2</sup>
Total	2,931 ft <sup>2</sup>	272 m <sup>2</sup>

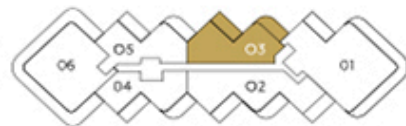
Views toward Biscayne Bay



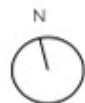
Views toward Atlantic Ocean



Bay View



Ocean View



5333 Collins Avenue, Miami Beach, FL 33140

ENGEL & VÖLKERS®

ORAL REPRESENTATIONS CANNOT BE RELIED UPON AS CORRECTLY STATING THE REPRESENTATIONS OF THE DEVELOPER. FOR CORRECT REPRESENTATIONS, MAKE REFERENCE TO THIS BROCHURE AND TO THE DOCUMENTS REQUIRED BY SECTION 718.03, FLORIDA STATUTES, TO BE FURNISHED BY A DEVELOPER TO A BUYER OR LESSEE. These materials are not intended to be an offer to sell, an invitation to buy a unit in the condominium. Such an offering shall only be made pursuant to the prospectus (offering circular) for the condominium and no purchase should be made until such time as the applicable purchase agreement, in no event shall any solicitation, offer or sale of a unit in the condominium be made in, or to residents of, any state or country in which such activity would be unlawful. This project is being developed by 5333 Collins Acquisition, LP, a Delaware limited partnership, which was formed solely for such purpose. Stated square footage and dimensions measured to the exterior boundaries of the interior walls and to the face of the glass for glass and dimensions that would be determined by using the description and definition of the "Unit" set forth in the Declaration (which generally only includes the interior space between the perimeter walls and excludes all interior structural components and other common elements). This method is generally used in sales materials and is provided to allow a prospective buyer to compare the Units with units in other condominium projects that utilize the same method. For your reference, the area of the Unit, determined in accordance with these defined wall boundaries, is set forth on Exhibit "D" to the Declaration. Measurements of rooms set forth on this floor plan are generally taken at the furthest points of each given room (as if the room were a perfect rectangle), without regard for any cutouts or notches. Accordingly, the area of the actual room will typically be smaller than the product area used by multiplying the stated length and width. All dimensions are approximate which will vary with actual construction, and all floor plans, specifications and other descriptive plans are subject to change and will not necessarily accurately reflect the final plans and specifications for the development.

# RESIDENCE 04

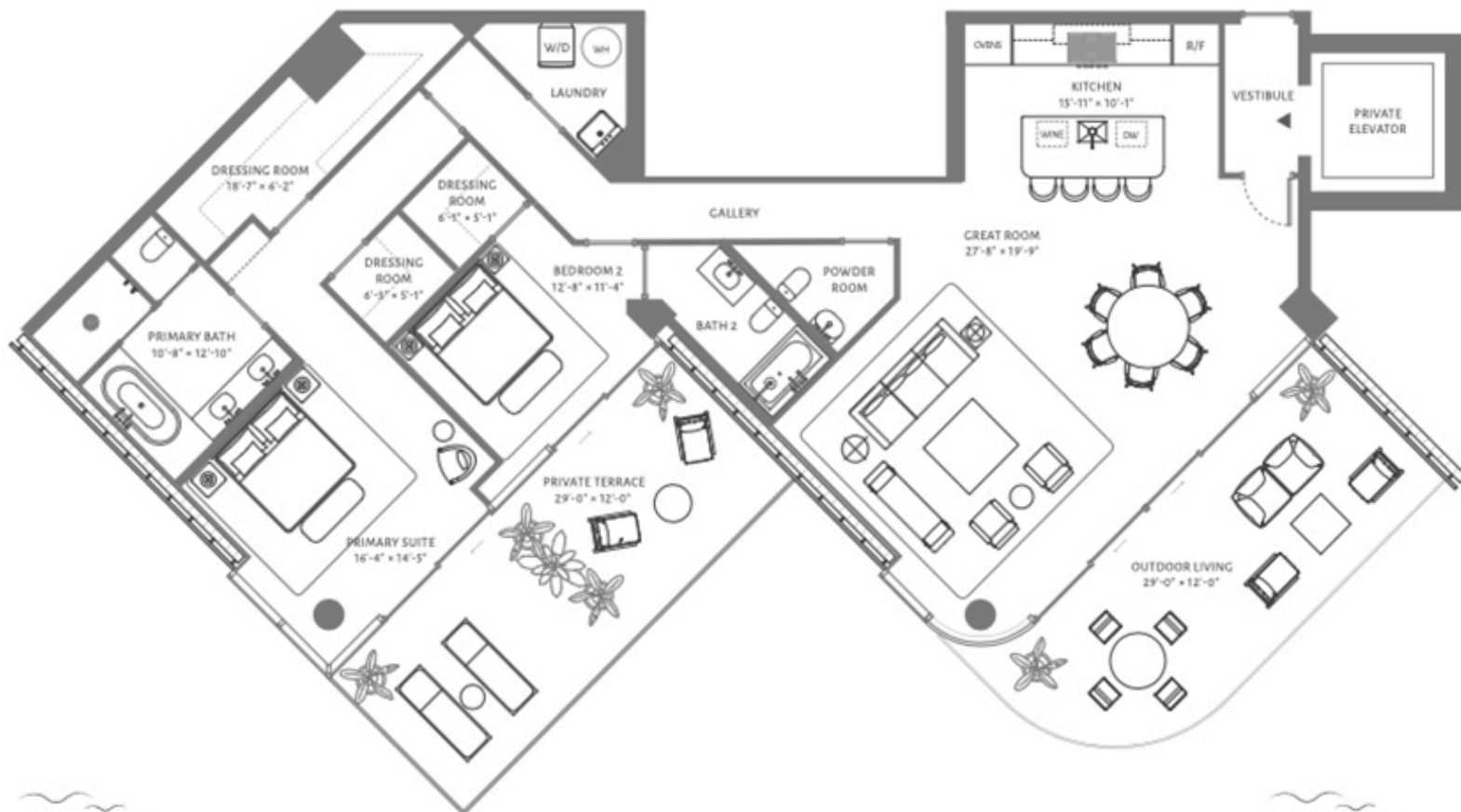
FLOORS 4 THROUGH 10

2 BEDROOMS  
2 BATHROOMS  
POWDER ROOM

INTERIOR  
2,121 ft<sup>2</sup> / 197 m<sup>2</sup>

EXTERIOR  
593 ft<sup>2</sup> / 55 m<sup>2</sup>

TOTAL  
2,714 ft<sup>2</sup> / 252 m<sup>2</sup>



BAY VIEW



OCEAN VIEW

THE  
PERIGON  
MIAMI BEACH

5333 Collins Avenue, Miami Beach

[theperigonmiami.com](http://theperigonmiami.com)

ENGEL & VÖLKERS®

LEGAL REPRESENTATIONS CANNOT BE RELIED UPON AS CORRECTLY CONTAINING THE REPRESENTATIONS OF THE DEVELOPER. FOR CORRECT REPRESENTATIONS, PLEASE REFER TO THE DOCUMENTS REQUIRED BY SECTION 203, FLORIDA STATUTES, TO BE PROVIDED BY A DEVELOPER TO A BUYER OR LESSEE. These materials are not intended to be an offer to sell, or solicitation to buy, or an offer to lease, or a solicitation to lease, or a contract, or any other legal instrument, or any part thereof, and they are not intended to be used in any way to create a contract, or any part thereof, and they are not intended to be used in any way to create a contract, or any part thereof, and they are not intended to be used in any way to create a contract, or any part thereof. All dimensions are estimates which will vary with actual construction and all floor plans, specifications and other development plans are subject to change and will not necessarily accurately reflect the final photos and specifications for the development. ©



# RESIDENCE 06

FLOORS 4 THROUGH 10

4 BEDROOMS  
5 BATHROOMS  
POWDER ROOM

INTERIOR  
3,808 ft<sup>2</sup> / 354 m<sup>2</sup>

EXTERIOR  
2,240 ft<sup>2</sup> / 208 m<sup>2</sup>

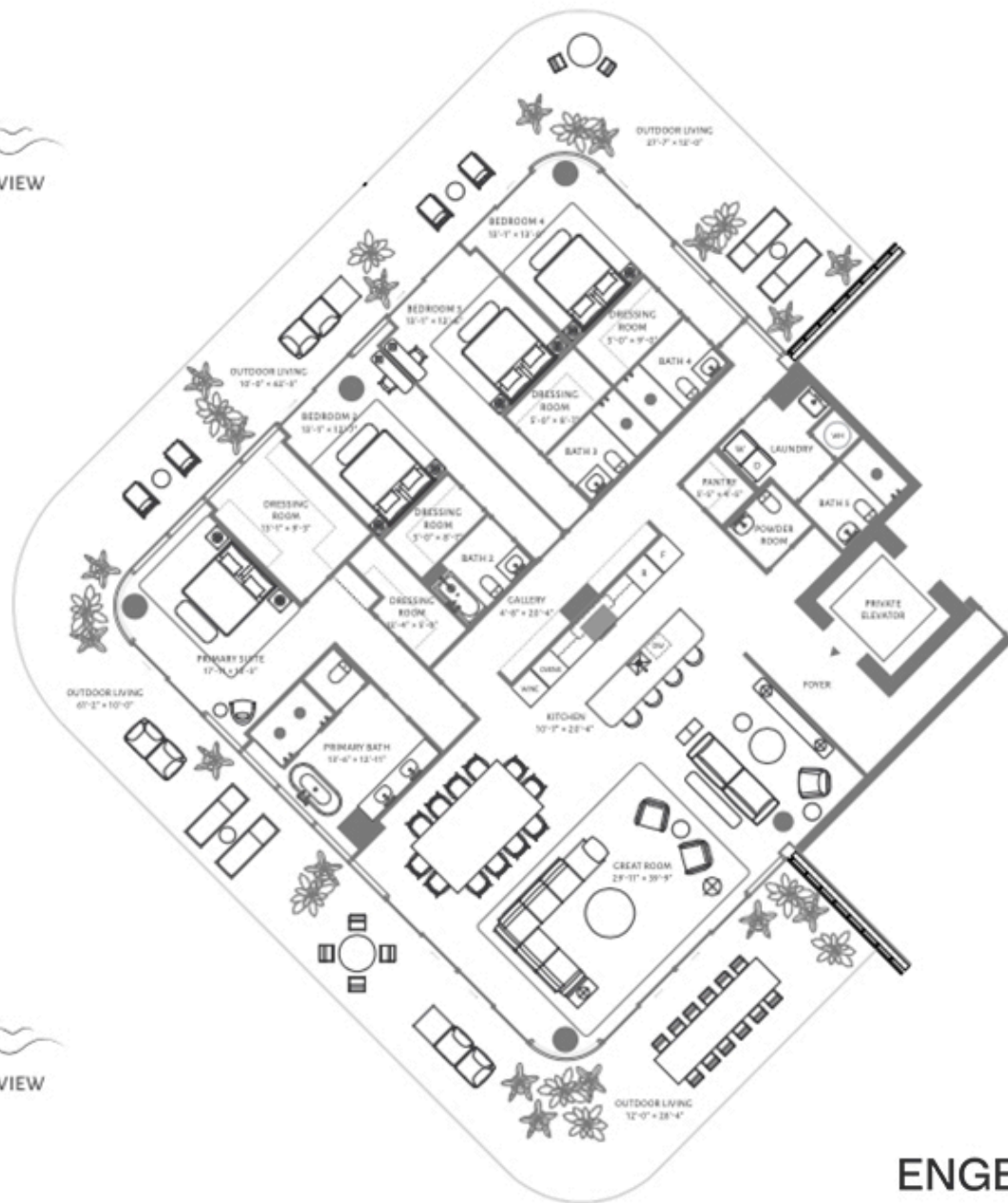
TOTAL  
6,048 ft<sup>2</sup> / 562 m<sup>2</sup>



BAY VIEW



BAY VIEW



OCEAN VIEW

THE  
PERIGON  
MIAMI BEACH

5333 Collins Avenue, Miami Beach

[theperigonmiami.com](http://theperigonmiami.com)

ENGEL & VÖLKERS®

LEGAL REPRESENTATIONS CANNOT BE RELIED UPON AS CORRECTLY STATING THE REPRESENTATIONS OF THE DEVELOPER. FOR CORRECT REPRESENTATIONS MAKE REFERENCE TO THIS BROCHURE AND TO THE DOCUMENTS REQUIRED BY SECTION 718.03, FLORIDA STATUTES, TO BE FURNISHED BY A DEVELOPER TO A BUYER OR LESSEE. These materials are not intended to be an offer, sell, or solicitation to buy and in the condominium, such an offering shall only be made pursuant to the prospectus (offering circular) for the condominium and no statement should be relied upon unless made in the prospectus or in the applicable purchase agreement. It is not valid until a solicitation, offer or sale of a unit in the condominium is made in, or to residents of, any state or country in which such activity would be lawful. This project is being developed by 5333 Collins Acquisition, LP a Delaware limited partnership, which may be sold solely for such purpose. Distances are measured to the exterior boundaries of the interior walls and the centerline of exterior opening walls and in fact vary from the square footage and dimensions that would be determined by using the exterior and definition of the "foot" set forth in the Declaration (which generally only include the interior space between the perimeter walls and excludes all exterior structural components and other common elements). This method is generally used in sales materials and is provided to allow a prospective buyer to compare the units with units in other condominium projects. For your reference, the area of the unit, determined in accordance with these defined unit boundaries, is as forth in Exhibit 1.7 to the Declaration. Misuse of terms of rooms and their size on these floor plans are generally taken at the furthest points of each given room (e.g. if the room were a perfect rectangle, without regard for any column or columns). Accordingly, the area of the actual room will typically be smaller than the product obtained by multiplying the stated length and width. All dimensions are estimates which will vary with actual construction, and all floor plans, specifications and other development plans are subject to change and will not necessarily accurately reflect the final plans and specifications for the development.